



LUXIMO

cylindrium

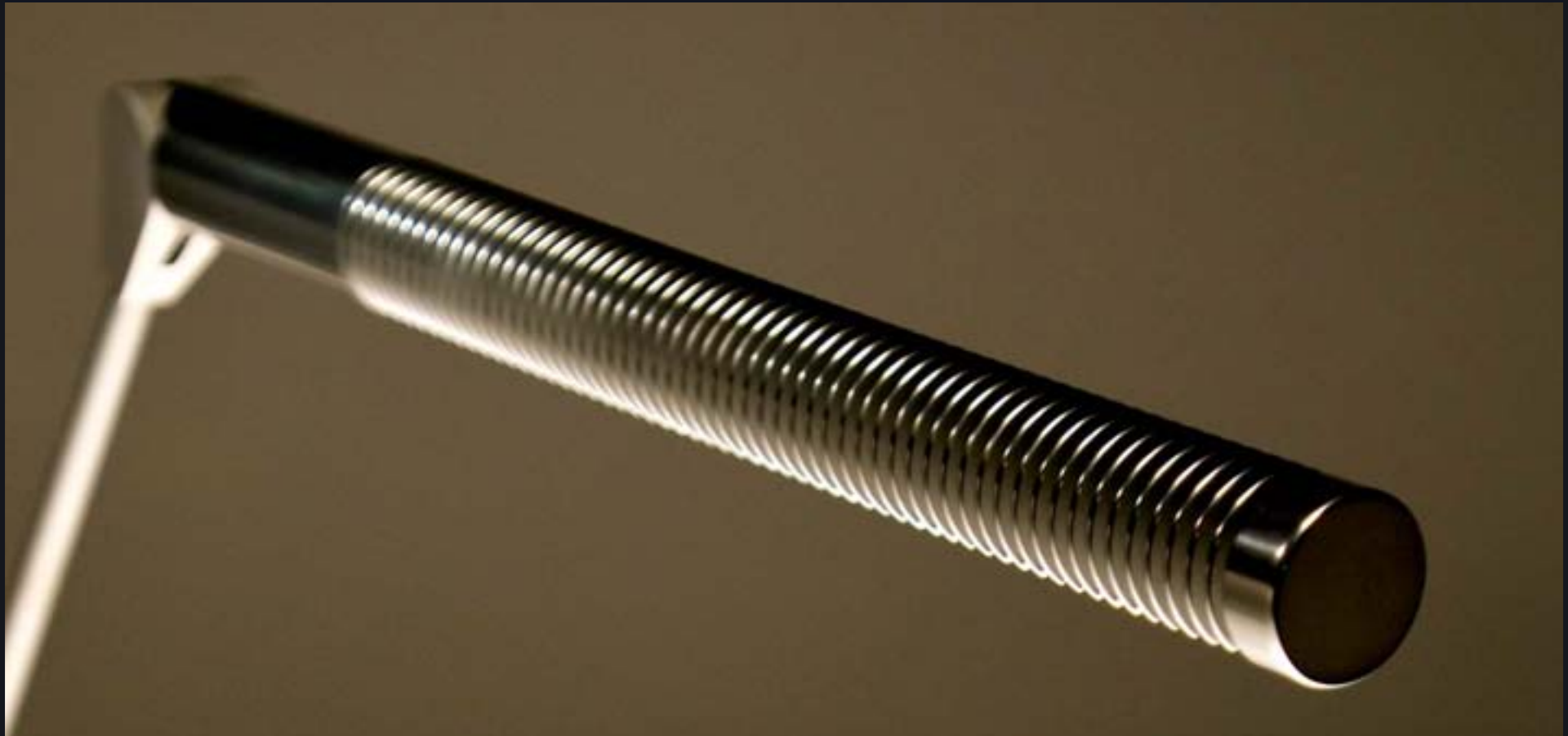
info@luximoled.com _
doe solid-state lighting workshop _
february 5th 2009 _

acknowledgements



ruth taylor, terry shoemaker _
steve paolini _
ed bailey _
DOE _

luximo



2 founders embodying core mission —
uncompromised design + technology —
2008 winner “lighting for tomorrow” —
exceed all energy star requirements —
3 patents pending —

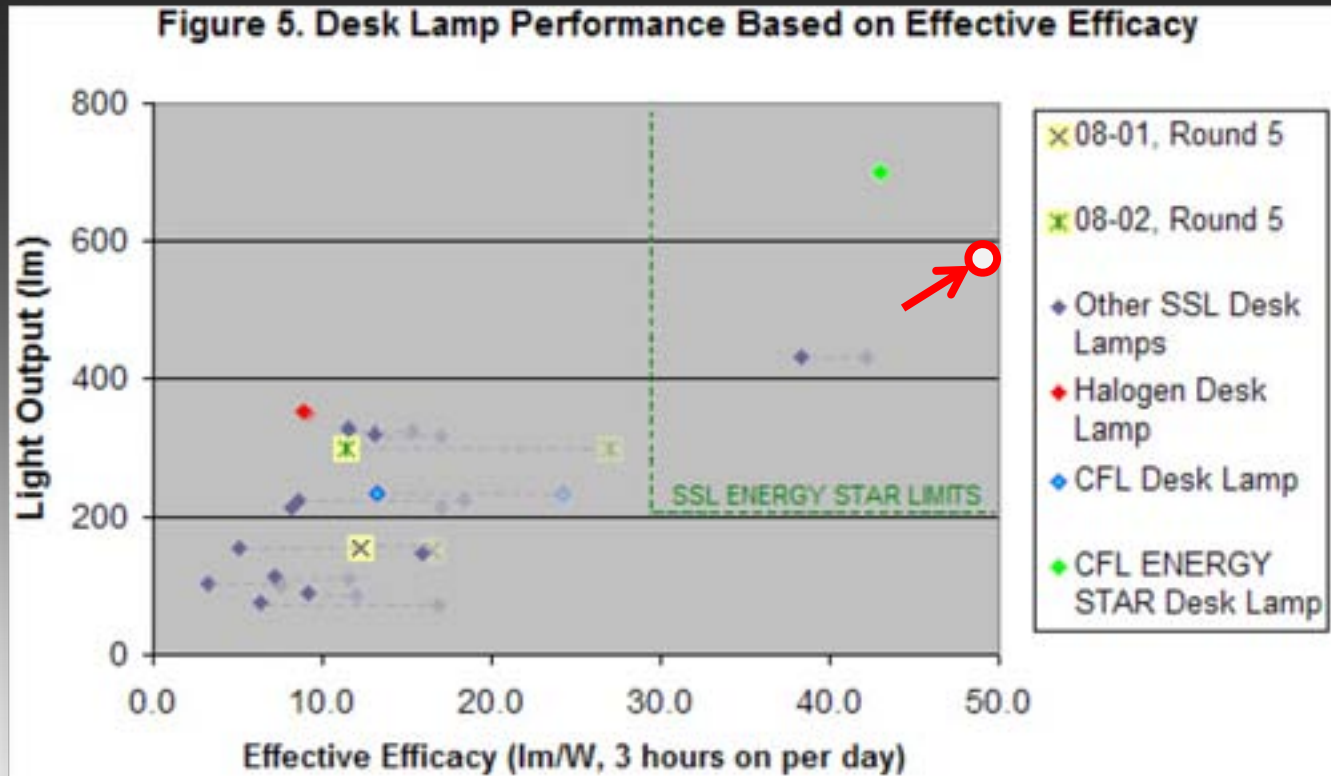
LUXIMO

cylindrium



580 lumens dimmable —
12w (48 lumens/watt) —
warm white 3300k cct —
color rendering cri 88 r_a —
low glare (120° full cut off) —

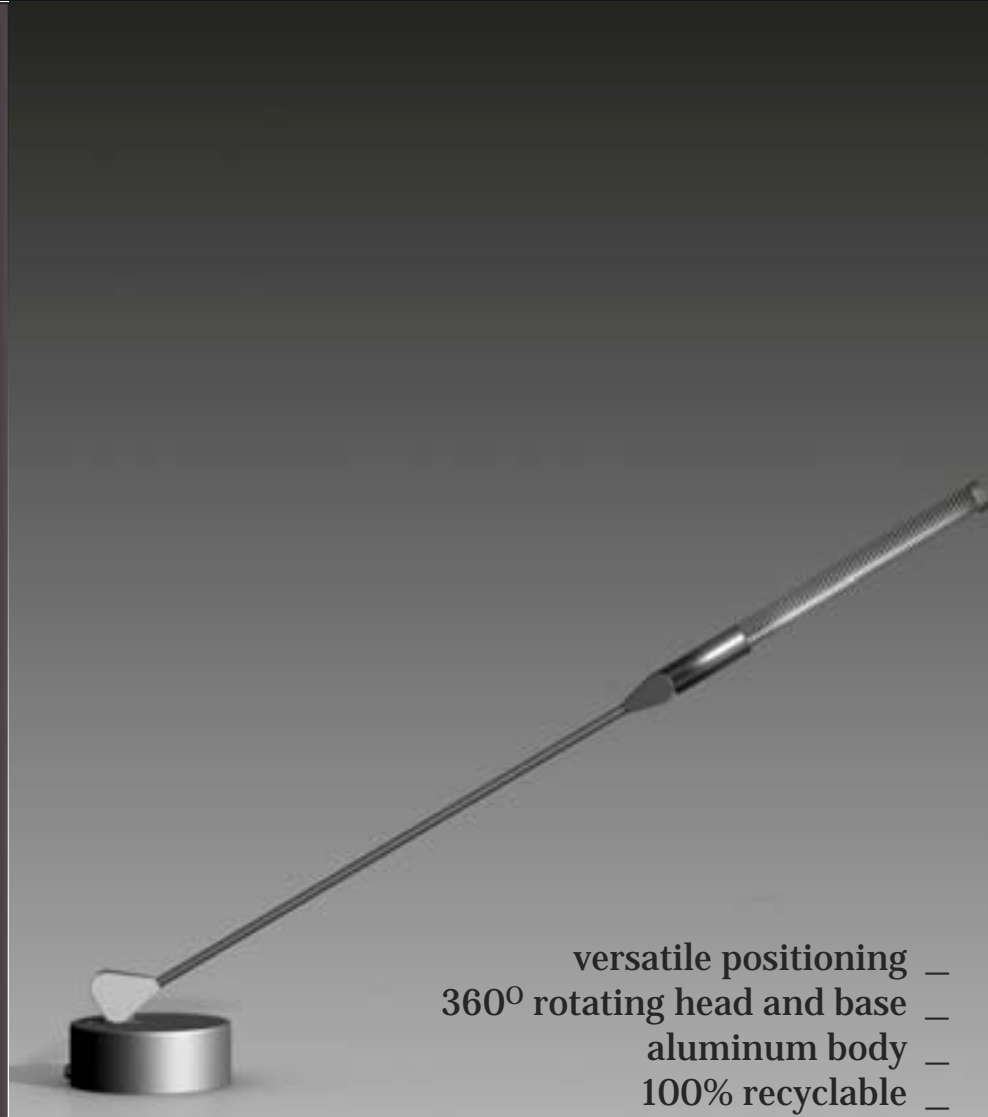
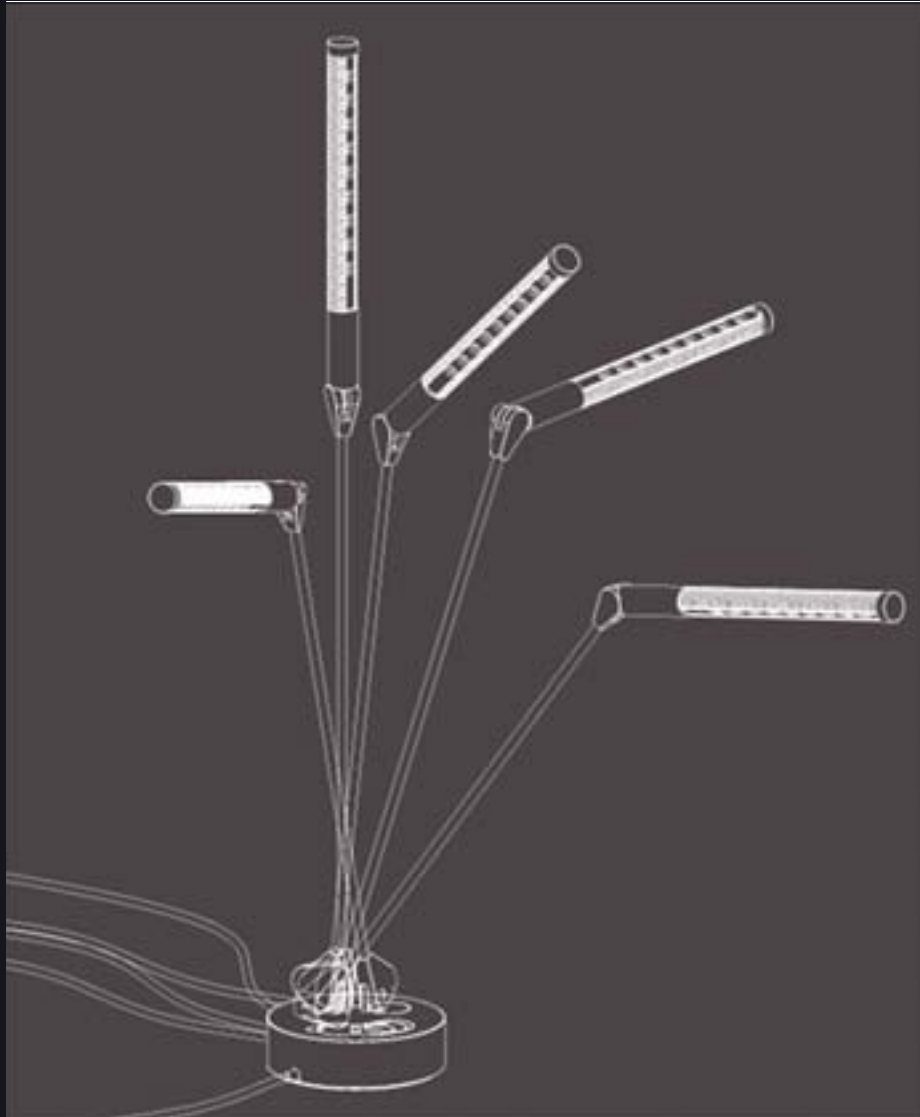
comparison



* Excerpted from DOE CALiPER Report, Round 5, May 2008

most efficient led task lamp _
most light output _

versatility



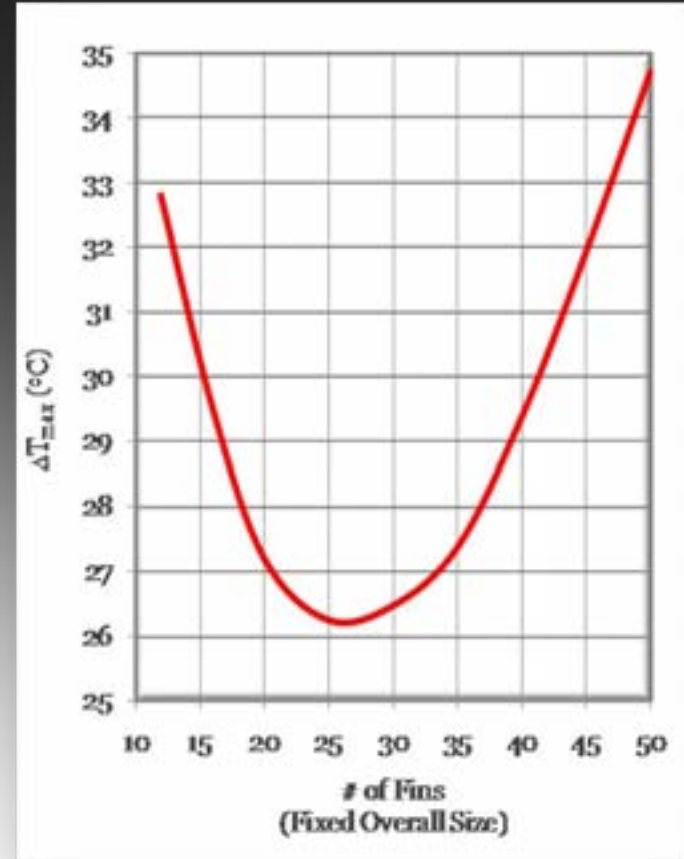
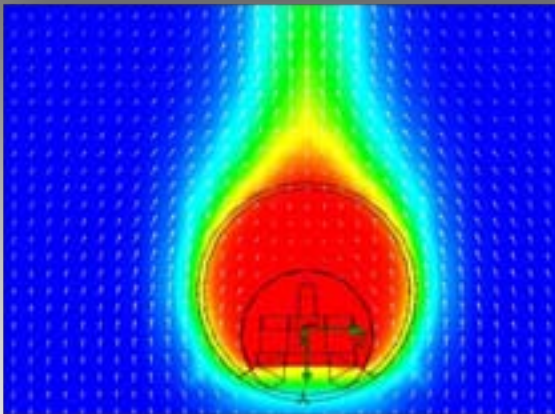
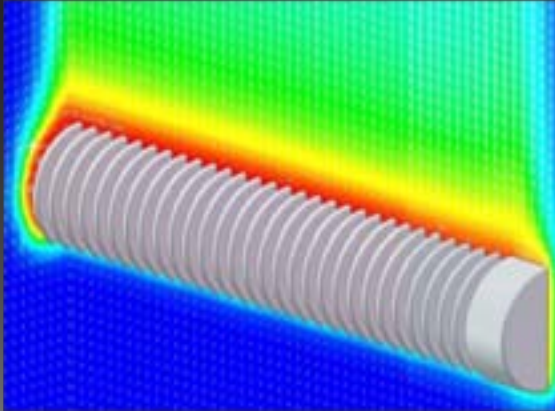
- versatile positioning —
- 360° rotating head and base —
- aluminum body —
- 100% recyclable —

aesthetic



core design element _
uncompromising attention to detail _
cool to touch _

thermal

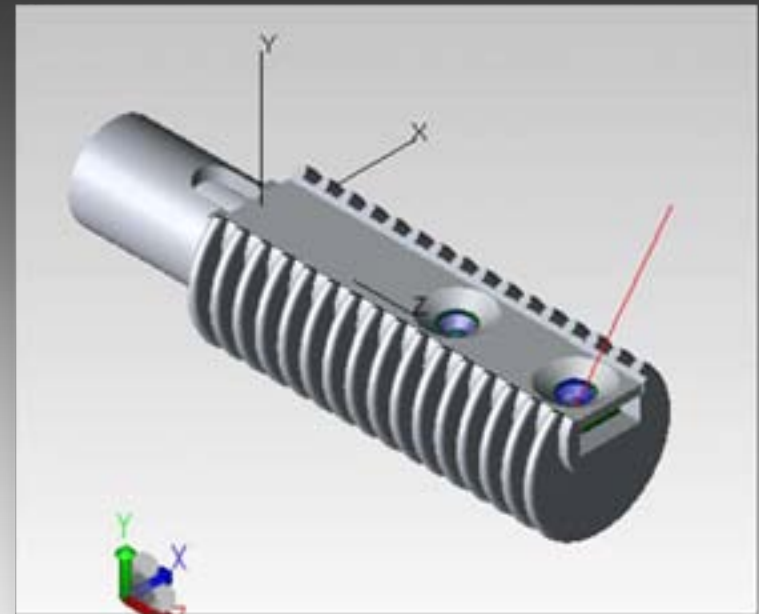
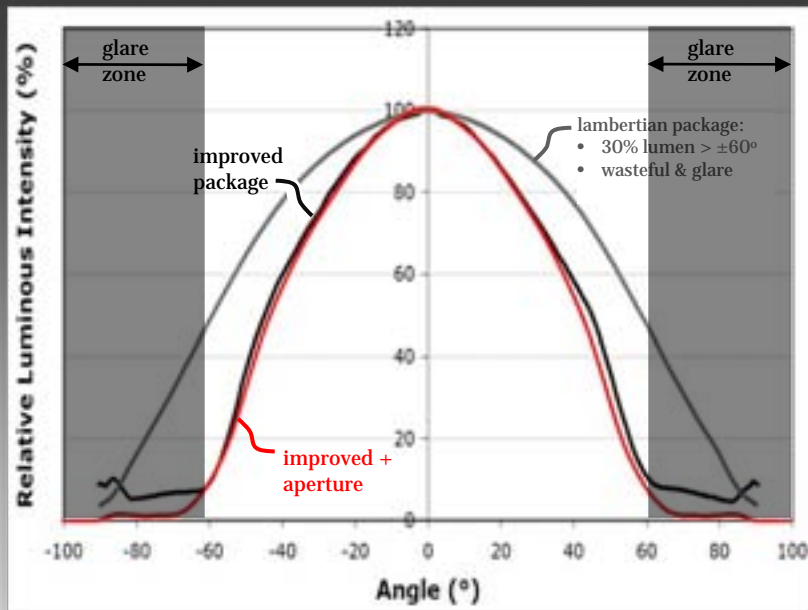


55°C max _
natural convection model _
optimal 20-35 fins _

optical

Zonal Lumen Density Requirement

Luminaire shall deliver a minimum of 85% of total lumens (initial) within the 0-60° zone (bilaterally symmetrical).



lambertian= waste & glare _
efficiency =useful lumens/watt _

off state power

Off-state Power

Luminaires shall not draw power in the off state.

Exception: Luminaires with integral occupancy, motion, photo-controls or individually addressable fixtures with external control and intelligence are exempt from this requirement. The power draw for such luminaires shall not exceed 0.5 watts when in the off state.



off state power -> driver in the base _
require high voltage latching switch _
also desire integrated dimmer _
few options _

concluding

